



## Revolutionizing How Students Learn from Anywhere

itopia is empowering K-12 school districts to transcend on-site Microsoft Windows labs with secure, cloud-based labs accessible remotely via students' Chromebooks or personal devices. itopia Labs is a fully-managed, virtual desktop and app solution hosted on Google Cloud -- delivering a high-fidelity student experience on any device, perfect for hybrid learning curricula. With itopia Labs, students can learn from anywhere in secure, easy-to-manage, virtual cloud labs.



**Native integration  
with Google  
Workspace &  
Google Classroom**



**Create virtual  
CTE and  
Windows labs  
in minutes**



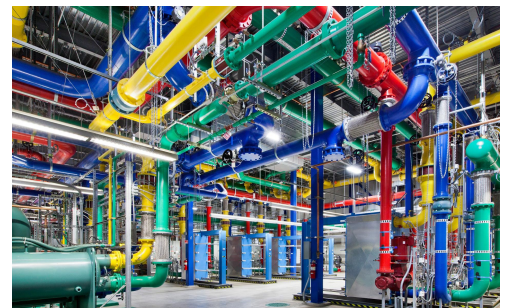
**Powerful video  
editing at high  
resolution**



**Predictable,  
flat-rate, pricing  
per student**

## Democratizing Access to Technology

itopia Labs makes high-tech education available to students in every geographic location and can fit any district's budget. With itopia Labs, students can experience video-editing, design, and engineering apps with scalable performance. Google Cloud's distributed data centers located throughout the United States and around the globe ensure itopia Labs is accessible from anywhere with low latency.

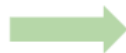


## Fully-Managed Solution

itopia Labs is delivered as a fully-managed service by itopia, including virtual lab environment monitoring, scaling, patching, and security. With an uptime Service Level Agreement of 99.9%, district administrators can focus on delivering highly-personalized, creative curricula for students without needing to worry about technology management complexity and maintenance.



**Jill's Device**  
(any device)



**Google Cloud**  
(via Google Workspace SSO)



**Virtual Apps**  
(Delivered by **itopia Labs**)



## Product Features at a Glance

### Single Sign-On with Google Workspace

School districts can finally do away with the hassle of managing Microsoft Active Directory and juggling multiple sets of login credentials. With itopia Labs, students can login to their virtual labs with the same username and password they use for Google Workspace. With one login to access all of their classwork, students can start the day seamlessly, while security is significantly improved.

### Native Integration with Google Classroom

With itopia Lab's native integration to Google Classroom, school administrators and teachers can add students on their own from existing Google Classroom configurations, speeding up onboarding and simplifying class management. And, students have easy access to all of their schoolwork files stored securely in Google Drive.

### Create a Virtual Lab from Curated Apps

Educators can select from a pre-configured list of Windows apps to deliver to students, including the popular Adobe Creative Cloud, AutoCAD, Microsoft Office, VS Code, and more. Provided as a fully-managed solution, itopia Labs will maintain and update app images behind the scenes, ensuring students are always learning with the latest app versions.

### Launch Virtual Apps in Seconds

With "pre-warmed" cloud infrastructure, itopia Labs enables students to launch their virtual apps instantaneously. Students can begin their schoolwork with no delay and enjoy consistent performance throughout the duration of their virtual session.

### High-Performance Streaming Protocol

itopia Labs provides an unrivaled student experience with its proprietary streaming protocol delivering a high-fidelity screen resolution and frame rate. Exceptionally important for apps like Adobe Premiere Pro, itopia Labs can deliver a sustained 1080p resolution at 30fps on any device, from anywhere. itopia Labs works natively with Google's Chrome Browser, so there is no end-user client or software install required.

### Role-Based Access Control

Educators can create a school district, schools, and classes from an easy-to-manage, nested dashboard within itopia Labs. Administrators can toggle between a district view, school view, and class view to monitor usage and make adjustments to virtual lab configurations. Role-based access control allows district administrators to provide only the access needed by school staff and teachers to monitor student activity.

### Resource Quota Control for Students

District administrators have full control over the amount of computing resources available to students, including CPU, memory, and GPU resources. Individual quotas can be assigned to students to limit the number of hours available for lab usage, resulting in predictable cloud costs.

### Usage Insights per Class, per Student

Schools can plan ahead for each semester with app usage insights and reporting from intuitive, analytics dashboards. Educators can gain a comprehensive understanding of how students are using assigned resources and make adjustments to save on cost.

**itopia is a leader in cloud orchestration and automation.**  
**We revolutionize how people work, learn, and create from anywhere.**